



RM196

Inverted Mesa Crystals Blanks 30 - 550MHz 5.0 x 7.0 SMD packages

The RM196 Series fits easily into typical 5.0 x 7.0 mm packages with excellent oscillator and filter performance; essentially a "ruggedized" upgrade from the established RX196, which is more suitable for automatic assembly/mounting equipment, and able to be processed to higher frequencies and higher manufacturing yields, whether manual or automatic assembly is used.

The proprietary processes yield a clean mesa and transition area to achieve high performance, and the plated versions provide cost effective high performance alternatives to in-house plating operations. We offer three plating options and a range of electrodes to match performance needs.

Special or custom designs are supported.

Features

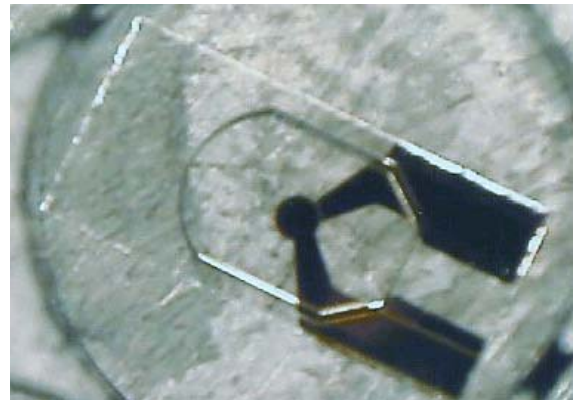
4.98 mm x 2.39 mm size for 5.0 x 7.0 (7.5) mm
High Q, chemically etched, free of etch channels
Mesa oriented across X-Axis
Electrodes in various sizes for specific frequency and C1/C0 ratios
Three metal plating options
Tune Low and Tune High options

Benefits:

High volume product which fit packages and tooling
High performance operation and wide frequency of operation
Cost effective solution

Applications

Crystals for precise frequency control applications in high volume packaging
Customer applications for SONET, 10G, 1G, Storage, network communications



Operation Mode	Fundamental or Overtone
Frequency Range	30 to 550MHz
Frequency Range 3Rd:	90 to 1.650 GHz
Frequency Tolerance	+/- 0.010 F ² (489KHz at 156.25)
Material and Q	Low Etch Channel Pure Z Quartz with a Q minimum of 1.8 Million
Surface Finish	Polished
Angle	Std AT cut 35D8' to 35D29' [EFG 3D6' t
Angle Tolerance	+/- 2', +/-1', +/-0.5'
Dimensions (mm)	4.98 x 2.39 mm
Dimensions (inches)	0.196 x 0.094"
Electrode Size	0.125mm to 1.27 mm, 5 mils to 50 mils
Electrode Style	Contacts at same end
Electrode Material	Chrome Gold or Aluminum
Electrode Freq. Tol.:	+/- 0.015 F ² (
Contact Material:	Same as Electrode or Chrome-Gold with Aluminum
Ship Pack Method	Vacuum sealed wafflepack
Specification Note	Custom or special requirements are available

For more information, sales and technical support:



The Roditi International Corporation Ltd

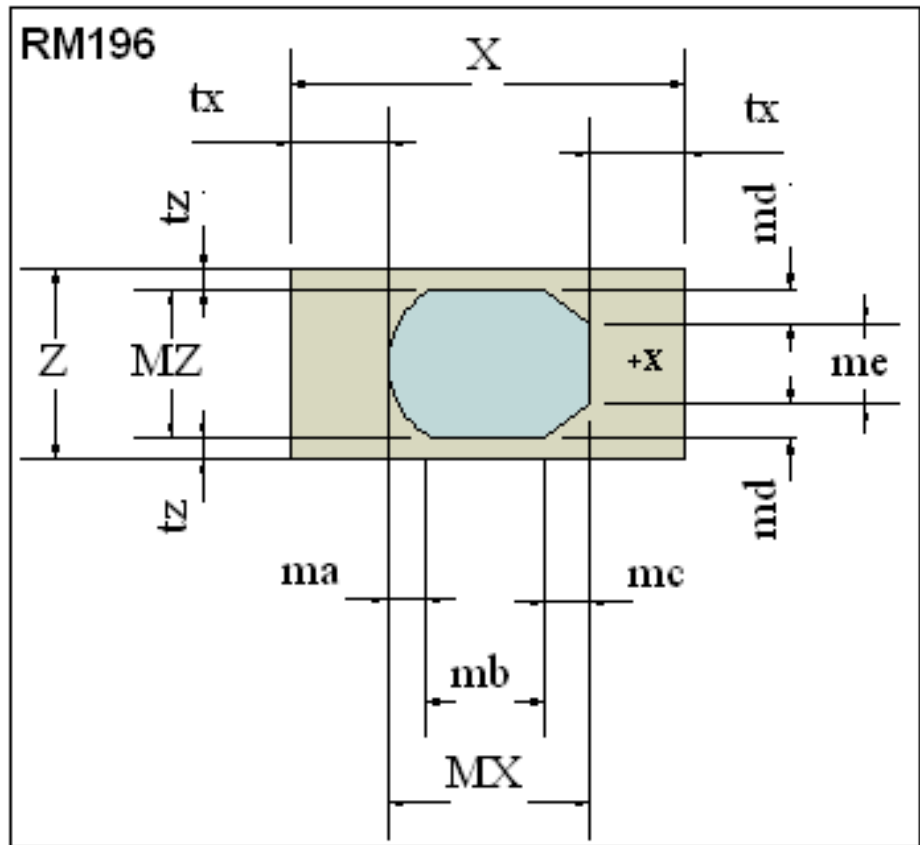
London, England

Phone +44 20 7439 4390

Fax +44 20 7434 0896

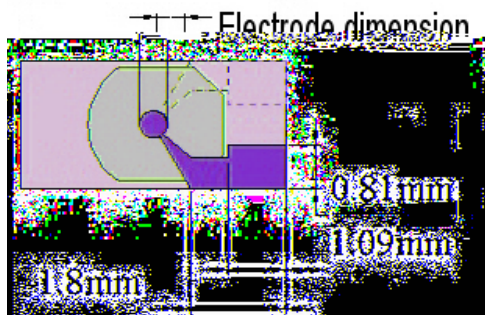
Email: sales@roditi.com

Device Dimensions



mm		
	mm	Tolerances
X	4.978	+0.000 -0.025
Z	2.388	+0.000 -0.025
MX	2.540	+0.025 -0.025
MZ	1.880	+0.025 -0.025
ma	0.483	+0.001 -0.001
mb	1.419	+0.003 -0.003
mc	0.559	+0.001 -0.001
md	0.432	+0.001 -0.001
m:	1.016	+0.002 -0.002
tx	1.219	+0.013 -0.013
t:	0.254	+0.013 -0.013
m:		NA
arcS		NA

Inches		
	mils (0.001")	Tolerances
X	196.00	+0.00 -1.00
Z	94.00	+0.00 -1.00
MX	100.00	+1.00 -1.00
MZ	74.00	+1.00 -1.00
ma	19.00	+0.05 -0.05
mb	55.88	+0.10 -0.10
mc	22.00	+0.05 -0.05
md	17.00	+0.05 -0.05
m:	40.00	+0.08 -0.08
tx	48.00	+0.5 -0.5
t:	10.00	+0.5 -0.5
m:		NA
arcS		NA



For more information, sales and technical support: